



Jacksonville Service Center

Elliott's Jacksonville, Florida service center supports the power generation, pulp and paper production, sugar refining, chemical, fertilizer, and oil refining industries of the southern United States. The 35,000-square-foot service shop is fully staffed by qualified personnel with diverse experience in repair techniques and procedures for virtually all makes, models, and types of rotating equipment. Service is available 24-hours a day, seven days a week.

With more than a century of turbomachinery experience and a tradition of excellence, Elliott can provide you with a single, comprehensive source for all your rotating equipment needs. We know what it takes to keep your equipment performance high and your maintenance cost low.

Elliott service centers are registered to ISO 9001 or have structured quality management systems. The Jacksonville service center specializes in the following areas of rotating equipment service:

- ♦ Utility steam turbines up to 950 MW, including Siemens Westinghouse, GE, and ABB ALSTOM
- ♦ Gas turbines: GE Frame 3 – 7 series, Siemens Westinghouse 101 – 501 series, and ABB Type 11 series
- ♦ Mechanical drive, single- and multi-stage steam turbine repairs: Elliott, Terry, Turbodyne, Murray, Coppus, GE, and Siemens Westinghouse
- ♦ Centrifugal compressor repairs: Elliott, I-R, Clark, Sulzer, and AC
- ♦ Expander repairs: IR, Worthington, Sulzer/GHH
- ♦ Generator hydrogen seal refurbishment
- ♦ Gear box repairs
- ♦ Inspections and overhauls
- ♦ Innovative weld repair technology
- ♦ Dynamic rotor balancing and vibration analysis
- ♦ Full nondestructive testing by Level II technicians
- ♦ Bucket, blade, and impeller repair and replacement
- ♦ Diaphragm and casing restoration
- ♦ Custom parts manufacturing
- ♦ Specialty shop machining
- ♦ Equipment rerates and upgrades
- ♦ Re-engineered modifications



35,000-square-foot facility with 60-ton crane capacity.



Facing a steam turbine rotor disc in a lathe.



Grinding a 200 MW rotor bearing journal in the 84-inch lathe.

Facility

- ♦ 60-ton maximum lifting capacity (two 30-ton cranes); 40 feet under hook

Boring Mills

- ♦ Vertical boring mill: maximum 106-inch swing, 84-inch table diameter, 70-inch maximum height
- ♦ Horizontal boring mill: maximum 72-inch x 48-inch table, 4-inch spindle

Lathes

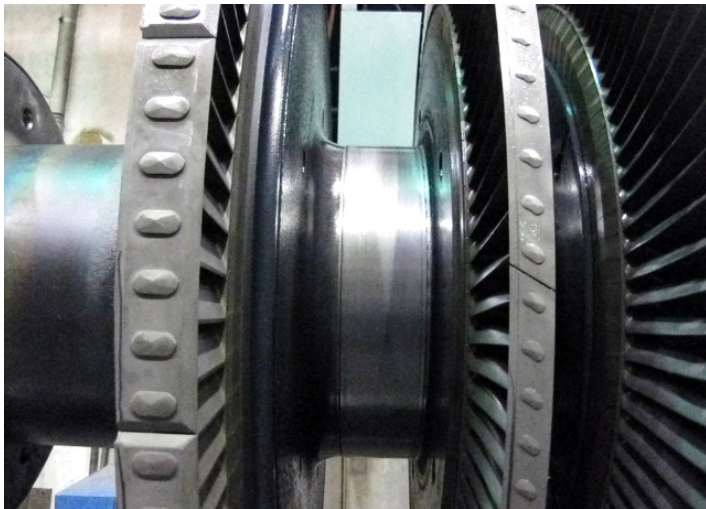
- ♦ Maximum 110-inch swing, 50-feet between centers

Dynamic Balancing

- ♦ Maximum 128-inch swing, 75,000 pounds, 2- to 20-inch journal range

Other Capabilities

- ♦ Welding: TIG, Stick, MIG, Pulse TIG, Sub-Arc
- ♦ Nondestructive magnetic particle testing



Steam turbine rotor after weld repair.

Power Generation Services

Elliott's Jacksonville facility is staffed and equipped to evaluate and repair hot gas path components, as well as rotating elements on industrial frame gas turbines. Our ASME Section IX certified welders are trained and experienced in the welding of high-temperature nickel alloys and the heat treatment necessary to restore physical properties after repairs.

Our experience with fossil-fueled power generation turbines includes specialized weld restoration of turbine rotating elements. Weld overlays and complete integral disk replacement techniques are used to establish reliable operating characteristics. We re-engineer steam path components to current industry standards by complete restoration of nozzle blocks and diaphragms using either 410 stainless steel, with required heat treatment, or Inconel weld techniques.



Machining the top of a small bucket in a CNC mill.

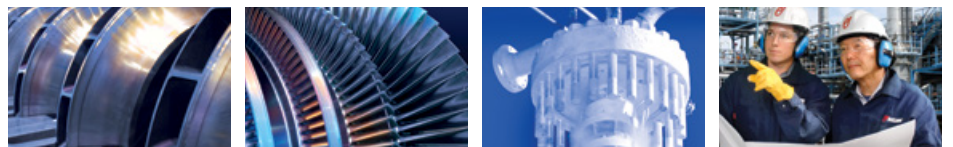


10485 Busch Drive North
Jacksonville, FL 32218-5601
Phone: 904-757-7600
Fax: 904-757-7604
Email: info@elliott-turbo.com

www.elliott-turbo.com

© 2018 Elliott Group

T H E W O R L D T U R N S T O E L L I O T T



C O M P R E S S O R S ■ T U R B I N E S ■ C R Y O D Y N A M I C S ■ G L O B A L S E R V I C E

SVS.4012.1018