

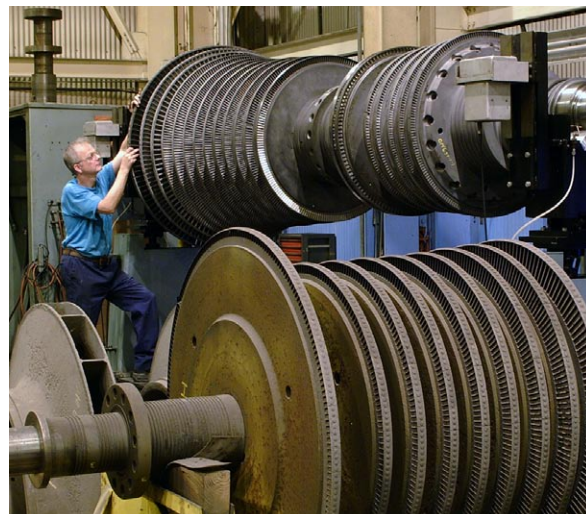
# Pittsburgh Service Center

Approximately 25 miles south of Pittsburgh, our shop in Donora, PA is easily accessible by I-70, as well as by railroad and barge. The 100,000 sq. ft. facility is fully equipped and staffed to service virtually all makes, models, and types of rotating equipment. The Donora repair facility specializes in the following areas of rotating equipment service:

- Single and multi-stage steam turbine repairs
- Centrifugal compressor repairs
- Gearbox repairs
- Inspections and overhauls
- Innovative weld repair technology
- Dynamic rotor balancing and vibration analysis
- Full non-destructive testing by Level II technicians
- Impeller manufacture and repair
- Bucket and blade repair/replacement
- Diaphragm and casing restoration
- Custom parts manufacturing
- Specialty shop machining
- Stress relieving, metallizing, and spray coating
- Equipment upgrades and rerates
- Re-engineered modifications
- Lube, seal, and piping system design and manufacturing
- Bearing manufacture and repair

All Elliott repair facilities are staffed by qualified personnel with a diverse experience base in repair techniques and procedures. All Elliott facilities are ISO 9001:2000 certified and support the latest non-destructive testing methods. Service is available 24 hours a day, seven days a week.

With nearly a century of turbomachinery experience and a tradition of excellence, Elliott can provide you with a single, comprehensive source for all your rotating equipment needs. We know what it takes to keep your equipment performance high and your maintenance cost low.



*Repairs on all makes and models of steam turbine and compressor rotors.*



*Weld repairing and re-machining of turbine disks and interstage labyrinth seals*



*Complete compressor case and component restoration*



The world turns to Elliott

**GLOBAL  
SERVICE**

## Facility

100 ton crane capacity, 28' hook height

## Boring Mills

VBM, 110" sliding table with adjustable swing from 110" – 197", 96" under rail with 30Ton load capacity.

HBM, max. 7' x 4.5' table, 8' max. length to tailstock, 65" max. height

## Lathes

Max. 130" swing, 35' between centers

## CNC Machining

Mori Seiki 2-axis plus C axis Lathe with 12 position turret and live tooling in all positions. 36" swing and 79" machining limit.

Monarch 4 axis machining center, 15"

Monarch turning center

## Dynamic Balancing

IRD – 500 lbs / 5000 lbs / 25,000 lbs / 75,000 lbs / 200,000 lbs (portable)

## Other Equipment

Welding - Sub Arc, Stick, TIG, MIG, Pulsed TIG, Pulsed MIG, Microplasma, Spot

Vertical milling machines

Drill Presses

Cylindrical Grinder

Rotorary Surface Grinder

Non-Destructive Testing

Sand, Shot, and Glass Bead Blasting

Steam and High Pressure Water Cleaning

Babbiting Equipment

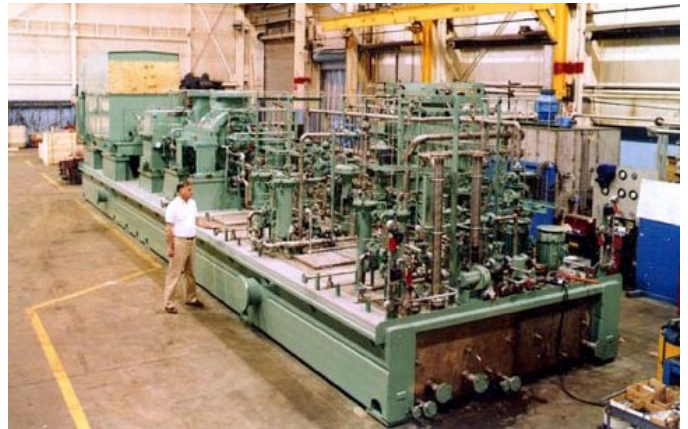
Heat Treat Ovens

Elliott repair facilities are ISO 9001:2000 certified and utilize state-of-the-art technology to ensure consistent quality.

Call on Elliott for all your turbomachinery service needs.



Elliott Company  
Donora Industrial Park  
1250 Scott Street  
Donora, PA 15033  
Phone: 724-379-5440  
Fax: 724-379-5535  
Email: info@elliott-turbo.com  
Web: elliott-turbo.com



## Oil Systems

Elliott's Oil System Division is a global leader in the manufacture of lube, seal, and piping systems for all types of rotating equipment. Our experienced team of personnel handles all aspects of these systems including design, fabrication, installation, and service, regardless of equipment manufacturer. Our systems are designed and built in accordance with industry standards: API 610/611/614, ASME, and ANSI. In addition to building new oil systems, we can also provide studies and rerates of existing systems, as well as dry gas seal packages, drainer packages, buffer gas packages, and interconnecting process piping.

- Flowrates: 2 gpm – 900 gpm
- Pressures: 5 psi – 4350 psi
- Piping diameters: ½" – 42"
- Pipe bending up to 6" at 3x diameter
- Hydrostatic pressure testing up to 6000 psi
- API 614 performance testing up to 1000 gpm



*Manufacture of new and reengineered bearings, as well as the repair of all types of bearings*