

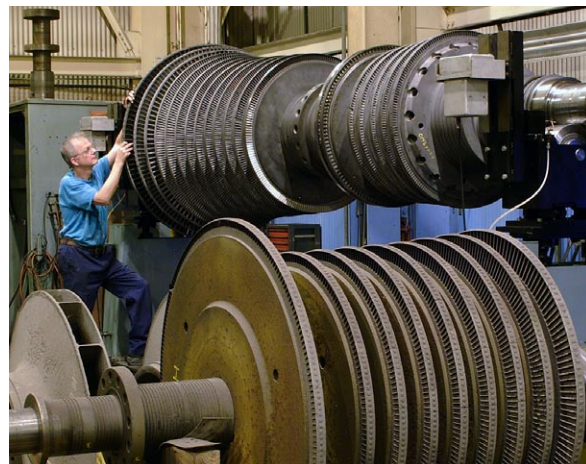
Jacksonville Service Center

With nearly a century of turbomachinery experience and a tradition of excellence, Elliott can provide you with a single, comprehensive source for all your rotating equipment needs. We know what it takes to keep your equipment performance high and your maintenance cost low.

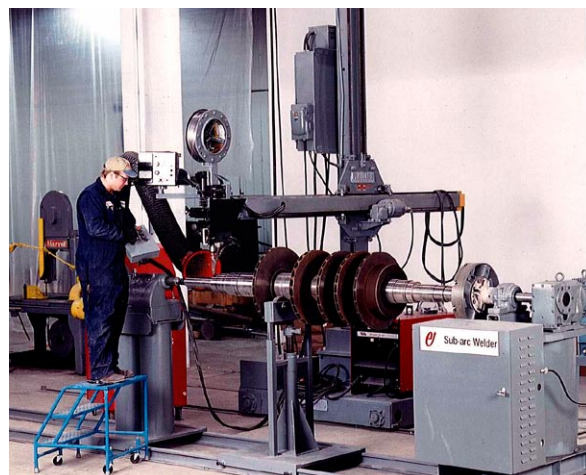
Our repair facilities are staffed by qualified personnel with a diverse experience base in repair techniques and procedures. They are ready to respond to your service requirements in a timely manner with the proper equipment. All Elliott facilities are ISO 9001:2000 certified and support the latest non-destructive testing methods. Service is available 24 hours a day, seven days a week.

Our 40,000 sq. ft. service shop in Jacksonville, FL is fully equipped and staffed to service virtually all makes, models, and types of rotating equipment. The Jacksonville repair facility specializes in the following areas of rotating equipment service:

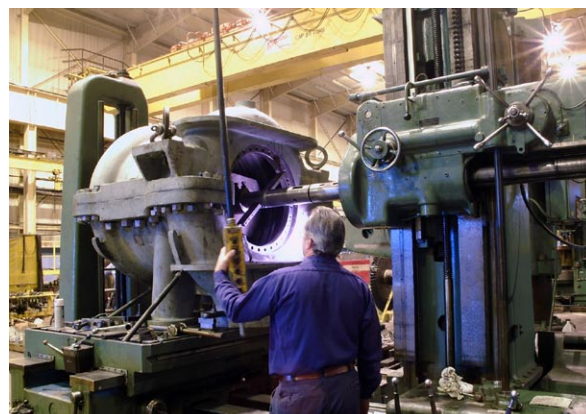
- Utility steam turbines – up to 950 MW – specializing in Siemens Westinghouse™, GE™, and ABB ALSTOM™
- Gas turbines – including GE™ Frame 3 – 7 series, Siemens Westinghouse™ 101 – 501 series, and ABB™ Type 11 series
- Mechanical drive single and multi-stage steam turbine repairs – Elliott, Terry™, Turbodyne™, Murray™, Coppus™, GE™, and Siemens Westinghouse™
- Centrifugal compressor repairs – Elliott, I-R™, Clark™, Sulzer™, and AC™
- Expander repairs - IR™, Worthington™, Sulzer/GHH™, and Rateau™
- Generator hydrogen seal refurbishment
- Gear box repairs
- Inspections and overhauls
- Innovative weld repair technology
- Dynamic rotor balancing and vibration analysis
- Full non-destructive testing by Level II technicians
- Bucket and blade repair/replacement
- Diaphragm restoration
- Custom parts manufacturing
- Specialty shop machining
- Equipment upgrades and rerates
- Re-engineered modifications



Repairs on all makes and models of steam turbine and compressor rotors.



Submerged arc welding is one of the many repair technologies utilized.



Complete compressor case and component restoration



The world turns to Elliott

**GLOBAL
SERVICE**

Facility

60 ton crane capacity

Boring Mills

VBM, max 140" swing

HBM, max 10' long table, 9' travel

Lathes

Max. 130" swing, 50' between centers

Dynamic Balancing

IRD – 500 lbs / 5,000 lbs / 40,000 lbs / 100,000 lbs

200,000 lbs (portable)

Other Equipment

Welding - SMAM, GMAW, GTAW, and SAW

Surface Grinder

Drill Press

Milling

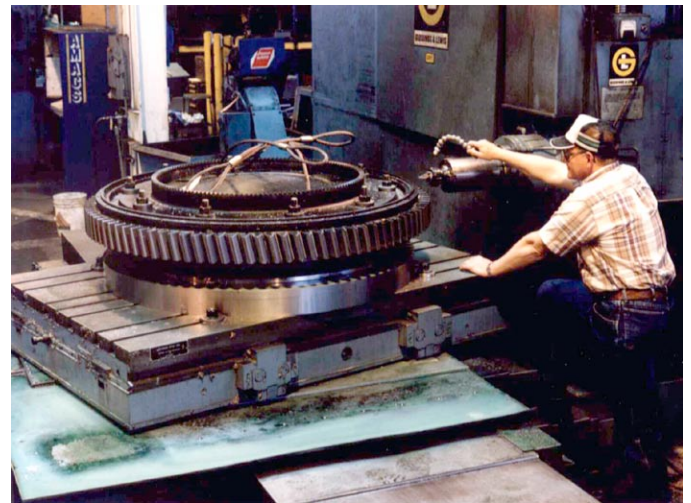
Heat Treat Ovens

Non-destructive testing

Power Generation Special Services

Resources installed in this facility support expansion of our capabilities to evaluate and repair hot gas path components, as well as rotating elements on industrial frame gas turbines. ASME, Section IX certified welders are trained and experienced in the welding of high temperature nickel alloys and the heat treatment necessary to restore physical properties after repairs.

Repair and evaluation expertise is not limited to frame gas turbines. Fossil-fueled power generation turbine experience includes specialized weld restoration to turbine rotating elements. Weld overlays and complete integral disk replacement techniques are utilized to establish reliable operation characteristics. In addition, steam path components are re-engineered to current industry standards by complete restoration of nozzle blocks and diaphragms utilizing either 410 stainless steel, with required heat treatment, or Inconel weld techniques.



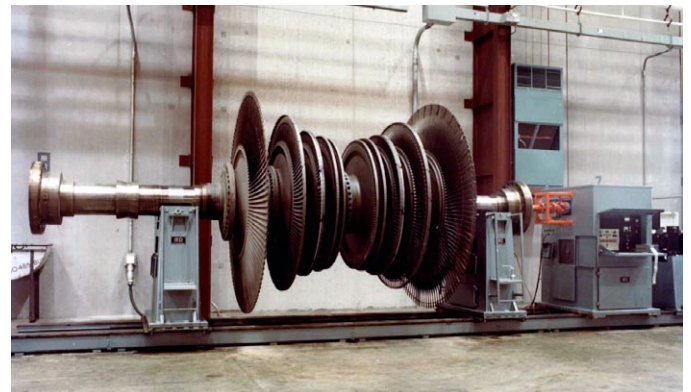
Complete steam and gas turbine component repair capabilities, including generator H2 seal refurbishment

Elliott repair facilities are ISO 9001:2000 certified and utilize state-of-the-art technology to ensure consistent quality.

Call on Elliott for all your turbomachinery service needs.



Elliott Company
10485 Busch Drive North
Jacksonville, FL 32218
Phone: 904-757-7600
Fax: 904-757-7604
Email: info@elliott-turbo.com
Web: elliott-turbo.com



Complete rotor refurbishment including reblading, disc root, thrust, seal and journal repairs and upgrades