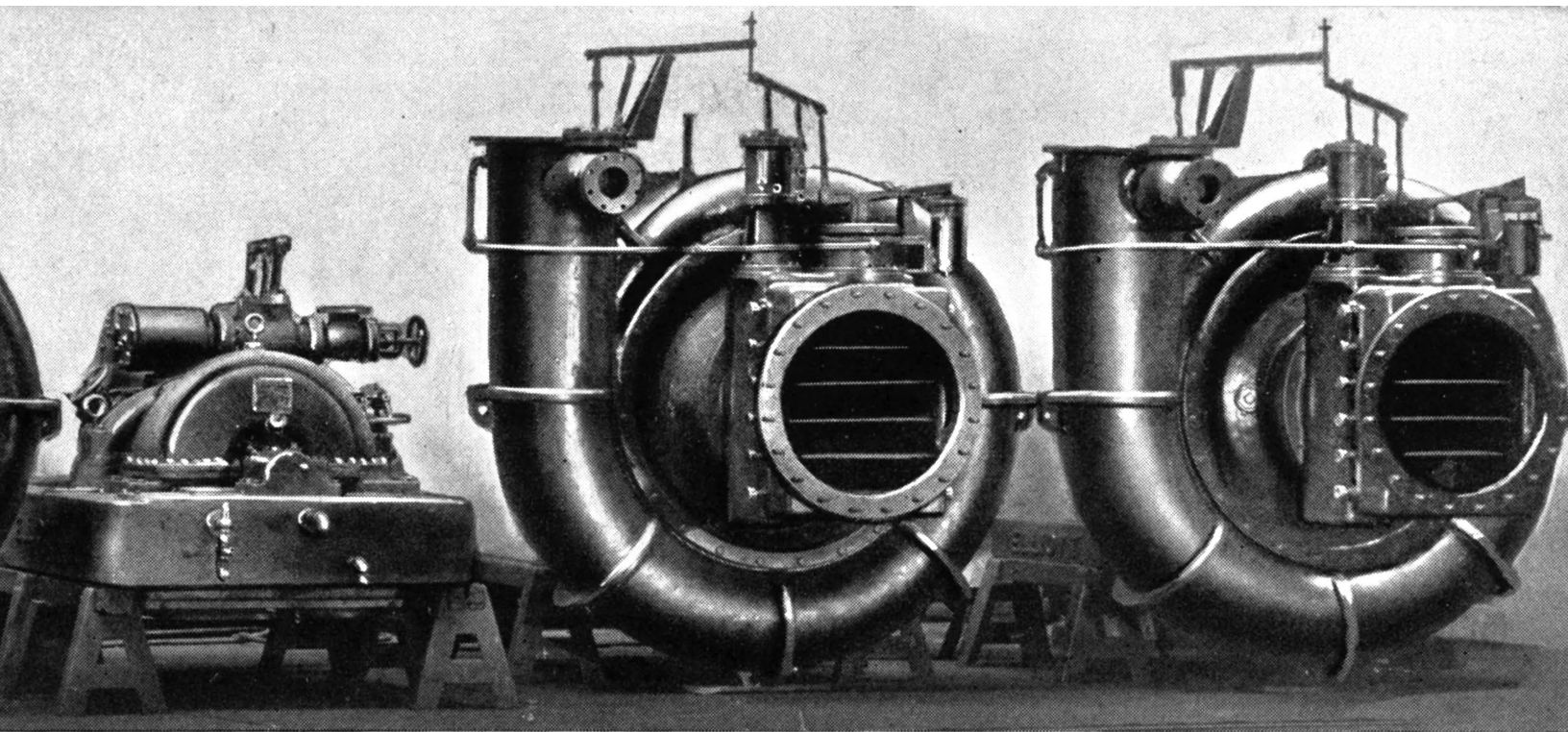


“...the Elliott single-inlet, overhung compressor became the standard of the industry.”



An offshoot of Elliott's purchase of Ridgway Dynamo and Engine Company was the acquisition by Elliott of Rateau, Battu, Smoot and Company in New York. The company was founded by Dr. A. C. E. Rateau of France. He is generally associated with Rateau staging in steam turbines, but Dr. Rateau also built the first centrifugal compressor around the turn of the century. In the 1930s Elliott engineers modernized the Rateau compressor design to produce O-line and later P-line blowers. Many of the innovations of this design are still used in single-stage compressors today.