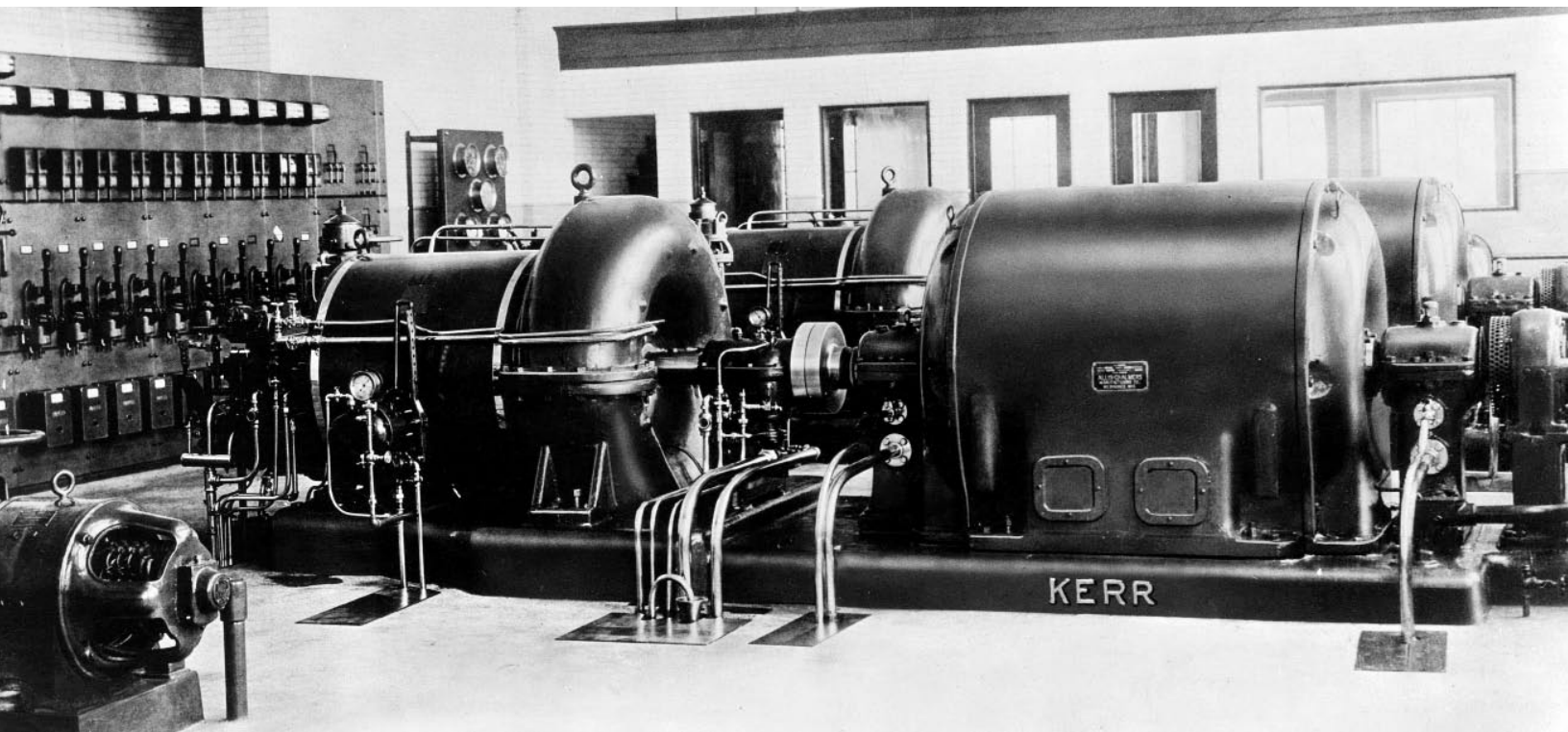


“The acquisition of Kerr Turbine resulted in a major expansion in the products Elliott offered and the markets it served.”



Kerr Turbine was established in 1904 by Charles Kerr to manufacture steam turbines, generators, and gears. Kerr was one of the first to recognize the advantages of small steam turbines over reciprocating engines for driving industrial machinery such as pumps and blowers. Kerr Turbine produced several firsts – the first mechanical drive turbine, the first small multistage turbine, and the first Pelton wheel turbine manufactured in the US.

With the purchase of Kerr Turbine in 1923, and the subsequent purchase in 1926 of Ridgway Dynamo & Engine Company, Elliott Company took on a new role as a major manufacturer of primary drivers for industrial and power generating equipment.

*In 2010 we will commemorate the 100<sup>th</sup> anniversary of the foundation of the original Elliott Company.*

*As we approach this centennial, we are pleased to share with you a series of significant events from each of Elliott's first 10 decades.*